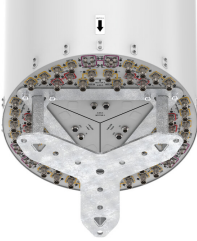


# 3X-RRZZV4S4-65DR27



72- ports tri-sector antenna, 12x 694-960, 12x 1427-2690, 24x 1695-2690 MHz, 65° HPBW, and 24x 3300-3800 MHz, 90° HPBW, 27x RET

- Separated Extension KIT available for this antenna, check Optional Mounting Kits section
- No pole mounting kit for this antenna

## General Specifications

<b>Antenna Type</b>	DualPol® tri-sector
<b>Band</b>	Multiband
<b>Calibration Connector Interface</b>	M-LOC
<b>Calibration Connector Quantity</b>	3
<b>Color</b>	Light Gray (RAL 7035)
<b>Performance Note</b>	Outdoor usage
<b>Radome Material</b>	Fiberglass, UV resistant
<b>RF Connector Interface</b>	4.3-10 Female   M-LOC
<b>RF Connector Location</b>	Bottom
<b>RF Connector Quantity, high band</b>	24
<b>RF Connector Quantity, mid band</b>	36
<b>RF Connector Quantity, low band</b>	12
<b>RF Connector Quantity, total</b>	72

## Remote Electrical Tilt (RET) Information

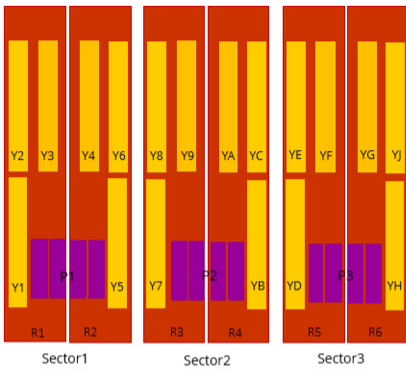
<b>RET Hardware</b>	CommRET v2
<b>RET Interface, quantity</b>	3 female   3 male
<b>Internal RET</b>	High band (3)   Low band (6)   Mid band (18)
<b>Protocol</b>	3GPP/AISG 2.0

## Dimensions

<b>Length</b>	2769 mm   109.016 in
<b>Net Weight, antenna only</b>	138.5 kg   305.34 lb
<b>Outer Diameter</b>	580 mm   22.835 in

## Array Layout

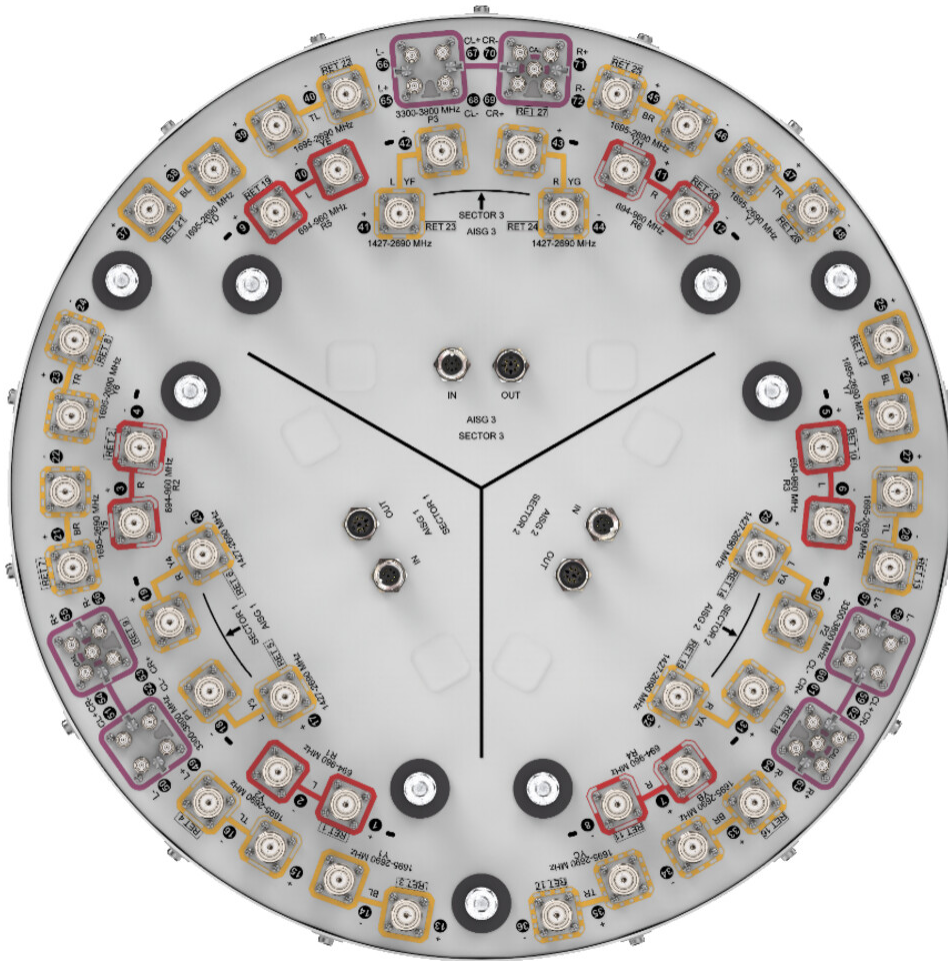
# 3X-RRZZV4S4-65DR27



Array ID	Frequency (MHz)	RF Connector	RET (SRET)	AISG No.	AISG RET UID
R1	694-960	1 - 2	1	AISG1	CPxxxxxxxxxxxxxxxxR1
R2	694-960	3 - 4	2		CPxxxxxxxxxxxxxxxxR2
Y1	1695-2690	13-14	3		CPxxxxxxxxxxxxxxxxY1
Y2	1695-2690	15-16	4		CPxxxxxxxxxxxxxxxxY2
Y3	1427-2690	17-18	5		CPxxxxxxxxxxxxxxxxY3
Y4	1427-2690	19-20	6		CPxxxxxxxxxxxxxxxxY4
Y5	1695-2690	21-22	7		CPxxxxxxxxxxxxxxxxY5
Y6	1695-2690	23-24	8		CPxxxxxxxxxxxxxxxxY6
P1	3300-3800	49 - 56	9	CPxxxxxxxxxxxxxxxxP1	
R3	694-960	5 - 6	10	AISG2	CPxxxxxxxxxxxxxxxxR3
R4	694-960	7 - 8	11		CPxxxxxxxxxxxxxxxxR4
Y7	1695-2690	25-26	12		CPxxxxxxxxxxxxxxxxY7
Y8	1695-2690	27-28	13		CPxxxxxxxxxxxxxxxxY8
Y9	1427-2690	29-30	14		CPxxxxxxxxxxxxxxxxY9
YA	1427-2690	31-32	15		CPxxxxxxxxxxxxxxxxYA
YB	1695-2690	33-34	16		CPxxxxxxxxxxxxxxxxYB
YC	1695-2690	35-36	17		CPxxxxxxxxxxxxxxxxYC
P2	3300-3800	57 - 64	18	CPxxxxxxxxxxxxxxxxP2	
R5	694-960	9 - 10	19	AISG3	CPxxxxxxxxxxxxxxxxR5
R6	694-960	11 - 12	20		CPxxxxxxxxxxxxxxxxR6
YD	1695-2690	37-38	21		CPxxxxxxxxxxxxxxxxYD
YE	1695-2690	39-40	22		CPxxxxxxxxxxxxxxxxYE
YF	1427-2690	41-42	23		CPxxxxxxxxxxxxxxxxYF
YG	1427-2690	43-44	24		CPxxxxxxxxxxxxxxxxYG
YH	1695-2690	45-46	25		CPxxxxxxxxxxxxxxxxYH
YJ	1695-2690	47-48	26		CPxxxxxxxxxxxxxxxxYJ
P3	3300-3800	65 - 72	27	CPxxxxxxxxxxxxxxxxP3	

## Port Configuration

# 3X-RRZZV4S4-65DR27



## Electrical Specifications

<b>Impedance</b>	50 ohm
<b>Operating Frequency Band</b>	1427 – 2690 MHz   1695 – 2690 MHz   3300 – 3800 MHz   694 – 960 MHz
<b>Polarization</b>	±45°

## Electrical Specifications, BASTA

Frequency Band, MHz	698–806	790–894	890–960	1920–2300	2300–2500	2490–2690	3300–3600	3600–3800
<b>Gain by all Beam Tilts, average, dBi</b>	14.9	15.6	16.1	16.6	17.3	17.4	14.5	14.6
<b>Front-to-Back Total Power at 180° ± 30°, dB</b>	22	23	23	25	25	25	25	25

## Electrical Specifications, Broadcast 65°

# 3X-RRZZV4S4-65DR27

Frequency Band, MHz	3300–3600	3600–3800
Gain, dBi	17.9	19
Beamwidth, Horizontal at 3 dB, degrees	65	65
Beamwidth, Vertical, degrees	6.4	6
Front-to-Back Total Power at 180° ± 30°, dB	27	27
USLS (First Lobe), dB	17	17

## Electrical Specifications, Service Beam

Frequency Band, MHz	3300–3600	3600–3800
Steered 0° Gain, dBi	19.6	20.1
Steered 0° Beamwidth, Horizontal, degrees	28	26
Steered 0° Front-to-Back Total Power at 180° ± 30°, dB	27	28
Steered 0° Horizontal Sidelobe, dB	14	13
Steered 30° Gain, dBi	19.3	19.1
Steered 30° Beamwidth, Horizontal, degrees	27	27
Steered 30° Front-to-Back Total Power at 180° ± 30°, dB	27	27

## Electrical Specifications, Soft Split

Frequency Band, MHz	3300–3600	3600–3800
Gain, dBi	19.2	18.9
Beamwidth, Horizontal, degrees	30	33
Front-to-Back Total Power at 180° ± 30°, dB	27	26

## Electrical Specifications, BASTA

Frequency Band, MHz	1427–1518	1695–1995	1920–2300	2300–2500	2490–2690	1695–1995
Gain by all Beam Tilts, average, dBi	15.1	16.5	17.4	17.7	17.8	15.8
Front-to-Back Total Power at 180° ± 30°, dB	25	27	28	28	28	25

## Mechanical Specifications

# 3X-RRZZV4S4-65DR27

---

**Wind Speed, maximum** 241 km/h (150 mph)

## Packaging and Weights

**Width, packed** 755 mm | 29.724 in

**Depth, packed** 692 mm | 27.244 in

**Length, packed** 3180 mm | 125.197 in

**Weight, gross** 165 kg | 363.762 lb

## Regulatory Compliance/Certifications

### Agency

ISO 9001:2015



### Classification

Designed, manufactured and/or distributed under this quality management system

## \* Footnotes

### Performance Note

Severe environmental conditions may degrade optimum performance