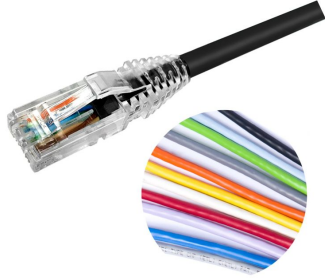


NPC6AUZDA



NETCONNECT® Cat 6A U/UTP A-wired RJ45 Patch Cord, LSZH

- High-performance patch cords exceeding industry standards supporting NETCONNECT channel specifications
- Standardized transparent, slim-line boots provides consistent patch cord appearance and supports highest density applications
- Colored clips are available to fit the transparent boot, eliminating the need of multiple colors for matching every jacket color
- Colored pull latch tabs are available for easier plug release handling from the modular jack

Product Classification

Regional Availability	EMEA
Portfolio	NETCONNECT®
Product Type	Twisted pair patch cord
Product Series	NPC
Ordering Note	Cords < 1 m are valid elements for use in a channel or as an equipment interconnect but due to their limited length are not guaranteed to meet component compliance requirements that were developed to assess the quality of longer cords Cords > 1 m are authorized for use in channels and are an effective standalone method used to connect active devices

General Specifications

ANSI/TIA Category	6A
Cable Type	U/UTP (unshielded)
Conductor Type	Solid
Interface, Connector A	RJ45 plug
Interface Feature, connector A	Standard
Interface, Connector B	RJ45 plug
Interface Feature, connector B	Standard
Jacket Color	Black Blue Green Orange Red Slate White Yellow
Pairs, quantity	4
Transmission Standards	IEEE 802.3bt Type 4
Wiring	T568A

Dimensions

Cable Assembly Length Range (m)	1 – 30
--	--------

NPC6AUZDA

Cable Assembly Length Range (ft)	1 – 100
Cable Assembly Length Range (cm)	15 – 999
Cable Assembly Length Range (in)	6 – 999
Diameter Over Jacket	7.24 mm 0.285 in
Compatible Conductor Gauge, solid	24 AWG

Ordering Tree

NPC - ¹⁰ ¹² ¹¹

Jacket Color

10	BK	Black
	BL	Blue
	GN	Green
	GY	Gray
	OR	Orange
	PK	Pink
	RD	Red
	VT	Violet
	WT	White
	YL	Yellow

UOM

11	F	Foot
	M	Meter
	N	Inch
	C	Centimeter

Length

12 XXX

Notes

- Cords > 1m are authorized for use in channels and are an effective standalone method used to connect active devices
- Cords < 1m are also valid elements for use in a channel or as an equipment interconnect but due to their limited length are not guaranteed to meet component compliance requirements that were developed to assess the quality of longer cords

Mechanical Specifications

Plug Insertion Life, minimum	750 times
-------------------------------------	-----------

Environmental Specifications

Operating Temperature	-20 °C to +60 °C (-4 °F to +140 °F)
Relative Humidity	Up to 93%, non-condensing
Acid Gas Test Method	IEC 60754-2
Environmental Space	Low Smoke Zero Halogen (LSZH)
Flame Test Method	IEC 60332-3-22
Safety Standard	UL 1863
Smoke Test Method	IEC 61034-2

Packaging and Weights

Packaging quantity	1
---------------------------	---

NPC6AUZDA

Regulatory Compliance/Certifications

Agency

RCM

**Classification**

Compliant to electrical safety & telecommunications requirements

Included Products

- | | | |
|--------------------------------|---|---|
| 2843018-3
MP-6AU-Boot-71-1 | - | Integrated Boot and Pair Manager for MP-6AU, size 71, transparent |
| 6-2843008-1
MP-6AU-Plug-B-1 | - | Modular Plug, Category 6A/6, Unshielded, Cond Insulation OD - 0.79mm, 100 pcs |