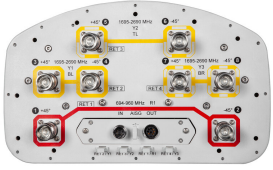


8P-2L6M-D4-V5



8-port sector antenna, 2x 694–960 and 6x 1695–2690 MHz, 65° HPBW, 4x RET with tilt indicators

- 4 Independent Arrays (1 Low band and 3 high bands) in a single radome housing
- Optimized radome design leading to market leading wind load performance
- Antenna with retractable tilt scale indicators and integrated pluggable RET
- Uses the 4.3-10 connector which is 40 percent smaller than the 7-16 DIN connector

General Specifications

Antenna Type	Sector
Band	Multiband
Color	Light Gray (RAL 7035)
Grounding Type	RF connector inner conductor and body grounded to reflector and mounting bracket
Performance Note	Outdoor usage
Radome Material	Fiberglass, UV resistant
Radiator Material	Aluminum Low loss circuit board
Reflector Material	Aluminum
RF Connector Interface	4.3-10 Female
RF Connector Location	Bottom
RF Connector Quantity, high band	6
RF Connector Quantity, low band	2
RF Connector Quantity, total	8

Remote Electrical Tilt (RET) Information

RET Hardware	CommRET v2
RET Interface	2x 8 pin connector as per IEC 60130-9 Daisy chain in: Male / Daisy chain out: Female Pin3: RS485A(AISG_B), Pin5: RS485B(AISG_A), Pin6: DC 10~30V, Pin7: DC_Return
RET Interface, quantity	1 female 1 male
Input Voltage	10–30 Vdc
Internal RET	High band (3) Low band (1)
Power Consumption, active state, maximum	10 W
Power Consumption, idle state, maximum	2 W

8P-2L6M-D4-V5

Protocol 3GPP/AISG 2.0 (Single RET)

Dimensions

Width 301 mm | 11.85 in

Depth 181 mm | 7.126 in

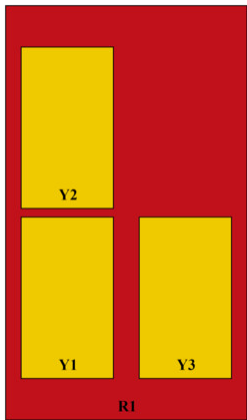
Length 2688 mm | 105.827 in

Net Weight, without mounting kit 22.3 kg | 49.163 lb

Array Layout

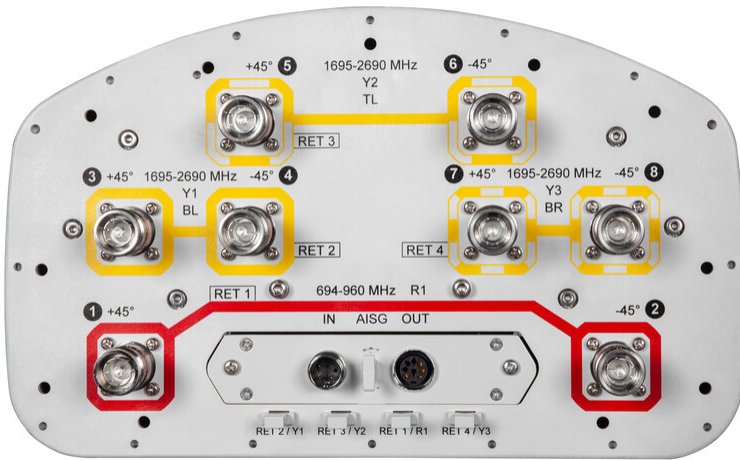
Array ID	Frequency (MHz)	RF Connector	RET (SRET)	AISG No.	AISG RET UID
R1	694-960	1 - 2	1	AISG1	CPxxxxxxxxxxxxxxxxR1
Y1	1695-2690	3 - 4	2	AISG1	CPxxxxxxxxxxxxxxxxY1
Y2	1695-2690	5 - 6	3	AISG1	CPxxxxxxxxxxxxxxxxY2
Y3	1695-2690	7 - 8	4	AISG1	CPxxxxxxxxxxxxxxxxY3

(Sizes of colored boxes are not true depictions of array sizes)



Port Configuration

8P-2L6M-D4-V5



Electrical Specifications

Impedance	50 ohm
Operating Frequency Band	1695 – 2690 MHz 694 – 960 MHz
Polarization	±45°
Total Input Power, maximum	900 W

Electrical Specifications

Frequency Band, MHz	694–790	790–890	890–960	1695–1920	1920–2200	2300–2500	2500–2690
Gain, dBi	16.5	16.7	16.7	17.7	17.9	17.5	17.7
Beamwidth, Horizontal, degrees	70	67	64	65	66	66	63
Beamwidth, Vertical, degrees	8.3	7.5	7	7.2	6.6	5.8	5.4
Beam Tilt, degrees	0–10	0–10	0–10	2–12	2–12	2–12	2–12
USLS (First Lobe), dB	19	18	18	17	19	20	18
Front-to-Back Ratio at 180°, dB	30	33	33	36	35	31	33
Front-to-Back Ratio, Copolarization 180° ± 30°, dB	30	31	29	31	30	28	28
Isolation, Cross Polarization, dB	27	27	27	27	27	27	27

8P-2L6M-D4-V5

Isolation, Inter-band, dB	27	27	27	27	27	27	27
VSWR Return loss, dB	1.5 14.0	1.5 14.0	1.5 14.0	1.5 14.0	1.5 14.0	1.5 14.0	1.5 14.0
PIM, 3rd Order, 2 x 20 W, dBc	-150	-150	-150	-150	-150	-150	-150
Input Power per Port, maximum, watts	500	500	500	300	300	250	250

Electrical Specifications, BASTA

Frequency Band, MHz	694–790	790–890	890–960	1695–1920	1920–2200	2300–2500	2500–2690
Gain by all Beam Tilts, average, dBi	16.2	16.5	16.4	17.2	17.6	17.1	17.5
Gain by all Beam Tilts Tolerance, dB	±0.4	±0.4	±0.5	±0.8	±0.5	±0.6	±0.4
Gain by Beam Tilt, average, dBi	0° 16.1 5° 16.3 10° 16.1	0° 16.6 5° 16.6 10° 16.1	0° 16.4 5° 16.6 10° 16.3	2° 17.3 7° 17.3 12° 16.8	2° 17.7 7° 17.7 12° 17.3	2° 17.1 7° 17.3 12° 16.7	2° 17.5 7° 17.7 12° 16.9
Beamwidth, Horizontal Tolerance, degrees	±1.3	±1.7	±2.1	±5	±4	±7.8	±10.7
Beamwidth, Vertical Tolerance, degrees	±0.3	±0.3	±0.3	±0.4	±0.4	±0.2	±0.2
Front-to-Back Total Power at 180° ± 30°, dB	22	25	25	28	28	26	26
CPR at Boresight, dB	20	25	23	19	20	22	22

Mechanical Specifications

Wind Loading @ Velocity, frontal	441.0 N @ 150 km/h (99.1 lbf @ 150 km/h)
Wind Loading @ Velocity, lateral	374.0 N @ 150 km/h (84.1 lbf @ 150 km/h)
Wind Loading @ Velocity, maximum	746.0 N @ 150 km/h (167.7 lbf @ 150 km/h)
Wind Loading @ Velocity, rear	448.0 N @ 150 km/h (100.7 lbf @ 150 km/h)
Wind Speed, maximum	241 km/h (150 mph)

Packaging and Weights

Width, packed	411 mm 16.181 in
Depth, packed	324 mm 12.756 in
Length, packed	2814 mm 110.787 in
Weight, gross	34.9 kg 76.941 lb

Regulatory Compliance/Certifications

Agency	Classification
---------------	-----------------------

8P-2L6M-D4-V5

ISO 9001:2015

Designed, manufactured and/or distributed under this quality management system

Included Products

- BSAMNT-3 – Wide Profile Antenna Downtilt Mounting Kit for 2.4 - 4.5 in (60 - 115 mm) OD round members. Kit contains one scissor top bracket set and one bottom bracket set.

* Footnotes

Performance Note Severe environmental conditions may degrade optimum performance

BSAMNT-3



Wide Profile Antenna Downtilt Mounting Kit for 2.4 - 4.5 in (60 - 115 mm) OD round members. Kit contains one scissor top bracket set and one bottom bracket set.

Product Classification

Product Type Downtilt mounting kit

General Specifications

Application Outdoor

Color Silver

Dimensions

Compatible Diameter, maximum 115 mm | 4.528 in

Compatible Diameter, minimum 60 mm | 2.362 in

Weight, net 6.2 kg | 13.669 lb

Material Specifications

Material Type Galvanized steel

Packaging and Weights

Included Brackets | Hardware

Packaging quantity 1

Weight, gross 6.4 kg | 14.11 lb

Regulatory Compliance/Certifications

Agency	Classification
CE	Compliant with the relevant CE product directives
CHINA-ROHS	Below maximum concentration value
ISO 9001:2015	Designed, manufactured and/or distributed under this quality management system
REACH-SVHC	Compliant as per SVHC revision on www.commscope.com/ProductCompliance
ROHS	Compliant
UK-ROHS	Compliant

BSAMNT-3

