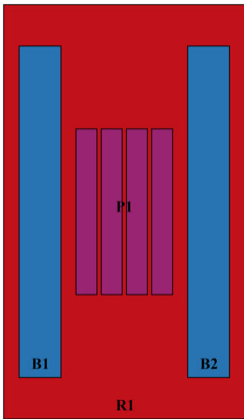


NHHS4-65A-R3B

Dimensions

| | |
|---------------------------------|--------------------|
| Width | 350 mm 13.78 in |
| Depth | 208 mm 8.189 in |
| Length | 1413 mm 55.63 in |
| Net Weight, antenna only | 23 kg 50.706 lb |

Array Layout

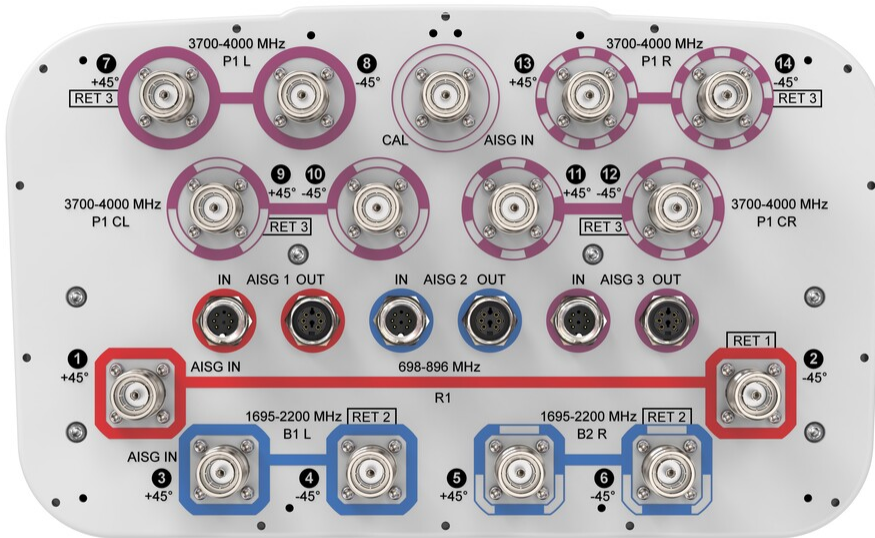


| Array ID | Frequency (MHz) | RF Connector | RET (SRET) | AISG RET UID |
|----------|-----------------|--------------|---------------|------------------|
| R1 | 698-896 | 1 - 2 | 1 | CPxxxxxxxxxxxxR1 |
| B1 | 1695-2200 | 3 - 4 | 2 | CPxxxxxxxxxxxxB1 |
| B2 | 1695-2200 | 5 - 6 | | |
| P1 | 3700-4000 | 7 - 14 | 3 | CPxxxxxxxxxxxxP1 |

(Sizes of colored boxes are not true depictions of array sizes)

Port Configuration

NHHS4-65A-R3B



Electrical Specifications

| | |
|-----------------------------------|---|
| Impedance | 50 ohm |
| Operating Frequency Band | 1695 – 2200 MHz 3700 – 4000 MHz 698 – 896 MHz |
| Polarization | ±45° |
| Total Input Power, maximum | 1,040 W @ 50 °C |

Electrical Specifications

| | R1 | R1 | B1,B2 | B1,B2 | B1,B2 | P1 |
|--|----------------|----------------|------------------|------------------|------------------|------------------|
| Frequency Band, MHz | 698–806 | 806–896 | 1695–1880 | 1850–1990 | 1920–2200 | 3700–4000 |
| RF Port | 1,2 | 1,2 | 3-6 | 3-6 | 3-6 | 7-14 |
| Gain, dBi | 13.9 | 14.2 | 16.7 | 17.1 | 17.1 | 16.4 |
| Beamwidth, Horizontal, degrees | 69 | 67 | 67 | 65 | 67 | 80 |
| Beamwidth, Vertical, degrees | 16.9 | 15.1 | 6.6 | 6.1 | 5.8 | 5.7 |
| Beam Tilt, degrees | 0–18 | 0–18 | 0–10 | 0–10 | 0–10 | 0–10 |
| USLS (First Lobe), dB | 20 | 20 | 15 | 16 | 17 | 13 |
| Front-to-Back Ratio at 180°, dB | 39 | 35 | 32 | 40 | 37 | 30 |

NHHS4-65A-R3B

| | | | | | | |
|---|------------|------------|------------|------------|------------|------------|
| Coupling level, Amp, Antenna port to Cal port, dB | | | | | | 26 |
| Coupling level, max Amp Δ , Antenna port to Cal port, dB | | | | | | ± 2 |
| Coupler, max Amp Δ , Antenna port to Cal port, dB | | | | | | 0.5 |
| Coupler, max Phase Δ , Antenna port to Cal port, degrees | | | | | | 5 |
| Isolation, Cross Polarization, dB | 25 | 25 | 25 | 25 | 25 | 25 |
| Isolation, Inter-band, dB | 25 | 25 | 25 | 25 | 25 | 25 |
| Isolation, Co-polarization, dB | | | | | | 19 |
| VSWR Return loss, dB | 1.5 14.0 | 1.5 14.0 | 1.5 14.0 | 1.5 14.0 | 1.5 14.0 | 1.5 14.0 |
| PIM, 3rd Order, 2 x 20 W, dBc | -153 | -153 | -153 | -153 | -153 | -145 |
| Input Power per Port at 50°C, maximum, watts | 300 | 300 | 250 | 250 | 250 | 75 |

Electrical Specifications, BASTA

| Frequency Band, MHz | 698–806 | 806–896 | 1695–1880 | 1850–1990 | 1920–2200 | 3700–4000 |
|---|-----------|-----------|-----------|-----------|-----------|-----------|
| Gain by all Beam Tilts, average, dBi | 13.7 | 13.9 | 16.3 | 16.7 | 16.8 | 15.6 |
| Gain by all Beam Tilts Tolerance, dB | ± 0.4 | ± 0.5 | ± 0.7 | ± 0.3 | ± 0.4 | ± 1.1 |
| Beamwidth, Horizontal Tolerance, degrees | ± 3 | ± 2 | ± 7 | ± 5 | ± 4 | ± 22 |
| Beamwidth, Vertical Tolerance, degrees | ± 1 | ± 0.8 | ± 0.3 | ± 0.3 | ± 0.3 | ± 0.5 |
| Front-to-Back Total Power at 180° \pm 30°, dB | 26 | 25 | 25 | 28 | 29 | 23 |
| CPR at Boresight, dB | 23 | 23 | 21 | 23 | 23 | 14 |
| CPR at Sector, dB | 12 | 7 | 11 | 12 | 9 | 4 |

Electrical Specifications, Broadcast 65°

| | |
|--------------------------------|-----------|
| Frequency Band, MHz | 3700–4000 |
| Gain, dBi | 16.9 |
| Beamwidth, Horizontal, degrees | 65 |
| Beamwidth, Vertical, degrees | 5.7 |
| Beamwidth, Vertical | ± 0.3 |

NHHS4-65A-R3B

Tolerance, degrees

| | |
|--|----|
| Front-to-Back Total Power at 180° ± 30°, dB | 25 |
| USLS (First Lobe), dB | 14 |

Electrical Specifications, Envelope Pattern

| | |
|----------------------------|------------------|
| Frequency Band, MHz | 3700–4000 |
| Gain, dBi | 20.7 |

Electrical Specifications, Service Beam

| | |
|--|------------------|
| Frequency Band, MHz | 3700–4000 |
| Steered 0° Gain, dBi | 20.7 |
| Steered 0° Gain Tolerance, dBi | ±0.6 |
| Steered 0° Beamwidth, Horizontal, degrees | 22 |
| Steered 0° Front-to-Back Total Power at 180° ± 30°, dB | 29 |
| Steered 0° Horizontal Sidelobe, dB | 13 |
| Steered 30° Gain, dBi | 19.7 |
| Steered 30° Gain Tolerance, dBi | ±0.8 |
| Steered 30° Beamwidth, Horizontal, degrees | 28 |
| Steered 30° Front-to-Back Total Power at 180° ± 30°, dB | 27 |

Electrical Specifications, Soft Split

| | |
|--|------------------|
| Frequency Band, MHz | 3700–4000 |
| Gain, dBi | 19.1 |
| Beamwidth, Horizontal, degrees | 32 |
| Front-to-Back Total Power at 180° ± 30°, dB | 26 |
| Horizontal Sidelobe, dB | 16 |

Mechanical Specifications

| | |
|---|--|
| Wind Loading @ Velocity, frontal | 224.0 N @ 150 km/h (50.4 lbf @ 150 km/h) |
| Wind Loading @ Velocity, lateral | 187.0 N @ 150 km/h (42.0 lbf @ 150 km/h) |

NHHS4-65A-R3B

| | |
|---|---|
| Wind Loading @ Velocity, maximum | 474.0 N @ 150 km/h (106.6 lbf @ 150 km/h) |
| Wind Loading @ Velocity, rear | 237.0 N @ 150 km/h (53.3 lbf @ 150 km/h) |
| Wind Speed, maximum | 241 km/h (150 mph) |

Packaging and Weights

| | |
|-----------------------|---------------------|
| Width, packed | 448 mm 17.638 in |
| Depth, packed | 355 mm 13.976 in |
| Length, packed | 1557 mm 61.299 in |
| Weight, gross | 33.4 kg 73.634 lb |

Regulatory Compliance/Certifications

| Agency | Classification |
|---------------|--|
| CHINA-ROHS | Below maximum concentration value |
| ISO 9001:2015 | Designed, manufactured and/or distributed under this quality management system |
| REACH-SVHC | Compliant as per SVHC revision on www.commscope.com/ProductCompliance |
| ROHS | Compliant |
| UK-ROHS | Compliant |



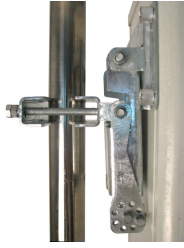
Included Products

| | | |
|----------|---|--|
| BSAMNT-3 | – | Wide Profile Antenna Downtilt Mounting Kit for 2.4 - 4.5 in (60 - 115 mm) OD round members. Kit contains one scissor top bracket set and one bottom bracket set. |
|----------|---|--|

* Footnotes

| | |
|-------------------------|---|
| Performance Note | Severe environmental conditions may degrade optimum performance |
|-------------------------|---|

BSAMNT-3



Wide Profile Antenna Downtilt Mounting Kit for 2.4 - 4.5 in (60 - 115 mm) OD round members. Kit contains one scissor top bracket set and one bottom bracket set.

Product Classification

Product Type Downtilt mounting kit

General Specifications

Application Outdoor

Color Silver

Dimensions

Compatible Diameter, maximum 115 mm | 4.528 in

Compatible Diameter, minimum 60 mm | 2.362 in

Weight, net 6.2 kg | 13.669 lb

Material Specifications

Material Type Galvanized steel

Packaging and Weights

Included Brackets | Hardware

Packaging quantity 1

Weight, gross 6.4 kg | 14.11 lb

Regulatory Compliance/Certifications

| Agency | Classification |
|---------------|--|
| CE | Compliant with the relevant CE product directives |
| CHINA-ROHS | Below maximum concentration value |
| ISO 9001:2015 | Designed, manufactured and/or distributed under this quality management system |
| REACH-SVHC | Compliant as per SVHC revision on www.commscope.com/ProductCompliance |
| ROHS | Compliant |
| UK-ROHS | Compliant |

BSAMNT-3

