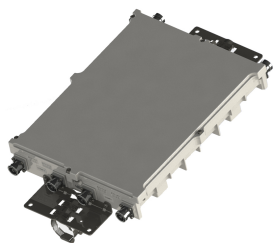


TD-PCS-1-B3B4-B5E | E15Z50P66



Twin Inband Diplexer PCS B3B4-B5E, DC sense

Product Classification

Product Type Diplexer

General Specifications

Color Gray

Connector Interface 7-16 DIN Female

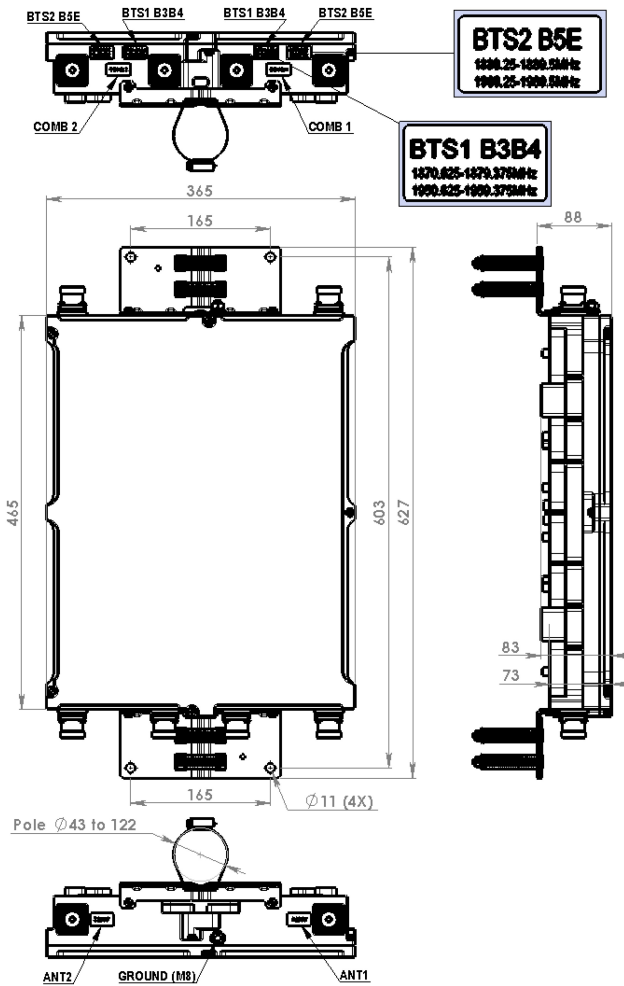
Dimensions

Height 465 mm | 18.307 in

Width 365 mm | 14.37 in

Depth 90 mm | 3.543 in

Outline Drawing



Electrical Specifications

5th Order IMD Test Method	Two +43 dBm carriers
5th Order IMD, maximum	-153 dBc

Electrical Specifications, Rx (Uplink)

Frequency Band	1870.625 – 1879.375 MHz
Insertion Loss, typical	0.8 dB
Return Loss, typical	18 dB
Isolation, typical	28 dB
Total Group Delay, maximum	250 ns

TD-PCS-1-B3B4-B5E | E15Z50P66

Electrical Specifications 2, Rx (Uplink)

Frequency Band	1880.25 – 1889.5 MHz
Isolation, typical	28 dB
Insertion Loss, typical	0.8 dB
Return Loss, minimum	18 dB

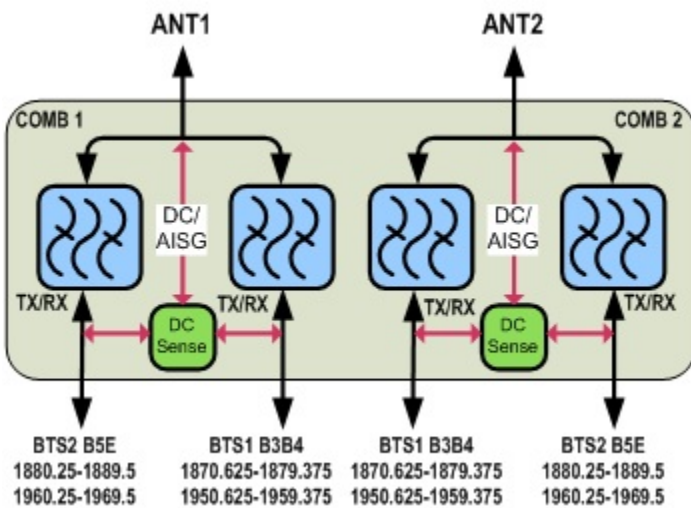
Electrical Specifications, Tx (Downlink)

Frequency Band	1950.625 – 1959.375 MHz
Isolation, typical	28 dB
Input Power, PEP, maximum	3000 W
Input Power, RMS, maximum	100 W
Insertion Loss, typical	0.8 dB
Return Loss, typical	18 dB

Electrical Specifications 2, Tx (Downlink)

Frequency Band	1960.25 – 1969.5 MHz
Insertion Loss, typical	0.8 dB
Isolation, typical	28 dB
Return Loss, minimum	18 dB
Total Group Delay, maximum	250 ns

Block Diagram



TD-PCS-1-B3B4-B5E | E15Z50P66

Environmental Specifications

Operating Temperature -40 °C to +65 °C (-40 °F to +149 °F)

Ingress Protection Test Method IEC 60529:2001, IP67

Packaging and Weights

Weight, net 15.8 kg | 34.833 lb