

INSTRUCTIONS

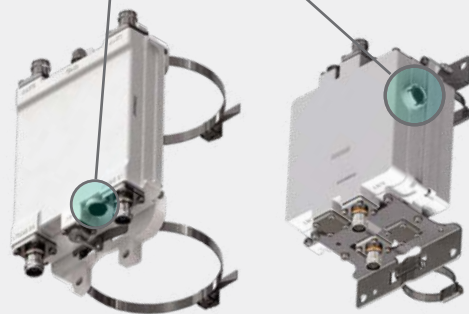
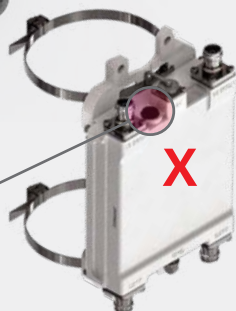
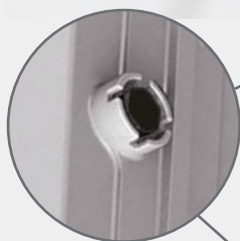


Power off BTS before starting the mounting process.

Do not apply power before all the connections are complete.



Vent Plug



Recommended installation orientation.



To maintain optimal performance over time of the pressure equalization vent plug, it is recommended to install the unit with the vent on the side (preferred) or facing downwards, to avoid collection of dust and dirt on it.

## Filter/TMA Installation Instructions

Inspect the equipment and ensure that needed tools and supplies are available before starting operations.

The instructions are addressed to skilled installation teams, properly trained, and instructed about relevant national safety regulations.

It is prohibited to open enclosed equipment.

The installation team is responsible for correctly installing any CommScope RF accessory (e.g., TMA, n-plexers, IMF filters) part of the RF path from the Base Station to the antenna.

CommScope designs and manufactures RF accessories operating under the environmental conditions stated in the product datasheet. After installation, site compliance to applicable regulatory requirements should be subjected to further verifications.

CommScope accessories and cables are recommended to ensure best installation.

### Mounting Instructions:

The accessories can be wall, pole or rack-mounted:

The mounting hardware support must withstand the device's weight and be suitable for extended outdoor use.

**Mount to the wall:** use available holes on the brackets. The screws are not provided with the equipment.

**Mount to a pole:** use the clamping set provided with the equipment and tighten to 7.5-10Nm.

**Mount in a rack:** use available holes on the brackets. The screws are not provided with the equipment.

Connect RF cables to the correct port following the port designators described in the product datasheet.

Tighten RF and AISG connectors by recommended torque from male connector manufacturers.

Finalize the grounding connection using suitable ground cable (5-16mm<sup>2</sup> section, typ.). Tighten the nut to the appropriate torque based on ground screw size. Ground cable is not supplied with the unit; good installation practice requires the ground path to be as short and direct as possible (no loops or knots allowed).

**Water sealing:** to avoid water ingress into the accessory, it is recommended to seal all connectors with proper water-resistant sealing tape or CommScope Heliax® SureGuard.

# Clamp Mount Instructions



**Step 1** - Unscrew the clamp



**Step 4** - Insert the free terminal of the clamp into lock



**Step 2** - Open the clamp



**Step 5** - Tighten the screw along the band up to the required torque (recommended 7.5 to 10Nm max) by means of a screwdriver



**Step 3** - Insert clamp into bracket



**Step 6** - Fully assembled

CommScope pushes the boundaries of communications technology with game-changing ideas and ground-breaking discoveries that spark profound human achievement. We collaborate with our customers and partners to design, create and build the world's most advanced networks. It is our passion and commitment to identify the next opportunity and realize a better tomorrow. Discover more at [commscope.com](https://commscope.com)

**COMMSCOPE®**

[commscope.com](https://commscope.com)

Visit our website or contact your local CommScope representative for more information.

© 2022 CommScope, Inc. All rights reserved. All trademarks identified by ™ or ® are trademarks or registered trademarks in the US and may be registered in other countries. All product names, trademarks and registered trademarks are property of their respective owners. This document is for planning purposes only and is not intended to modify or supplement any specifications or warranties relating to CommScope products or services.

CO-116509-EN (03/22)