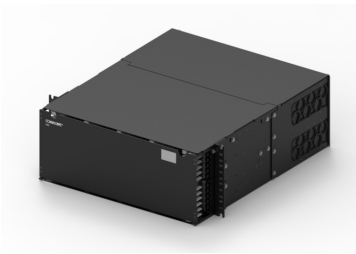


# CHD-4U



SYSTIMAX® CHD 4U sliding tray fiber panel, accepts (48) CHD ULL modules, splice cassettes or MPO panels, providing up to 288 duplex LC ports or up to 288 MPO ports, black, High Speed Migration

## Product Classification

<b>Regional Availability</b>	Asia   Australia/New Zealand   EMEA   Latin America   North America
<b>Portfolio</b>	CommScope®
<b>Product Type</b>	Fiber patch panel
<b>Product Series</b>	CHD

## General Specifications

<b>Application</b>	Accepts 48 CHD Universal Modules, or CHD MPO/LC adapter packs
<b>Rack Units</b>	4
<b>Shelf Movement</b>	Sliding

## Dimensions

<b>Height</b>	177.8 mm   7 in
<b>Width</b>	482.6 mm   19 in
<b>Depth</b>	538.48 mm   21.2 in

## Packaging and Weights

<b>Weight, net</b>	15.604 kg   34.4 lb
--------------------	---------------------

## Regulatory Compliance/Certifications

<b>Agency</b>	<b>Classification</b>
CHINA-ROHS	Below maximum concentration value
REACH-SVHC	Compliant as per SVHC revision on <a href="http://www.commscope.com/ProductCompliance">www.commscope.com/ProductCompliance</a>
ROHS	Compliant

