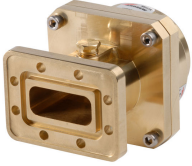


277SEM

Fixed-tuned PDR70 for elliptical waveguide 77



Product Classification

Product Type Elliptical waveguide connector

General Specifications

Attachment Method Tab-flare | Tool-flare

Body Style Straight, fixed-tuned

Inner Contact Plating Unplated

Interface PDR70

Outer Contact Plating Unplated

Pressurizable Yes

Dimensions

Width 88.392 mm | 3.48 in

Length 112.522 mm | 4.43 in

Transition Length 75.438 mm | 2.97 in

Waveguide Size WR137 | WG14 | R70

Electrical Specifications

Insertion Loss, typical 0.01 dB

Operating Frequency Band 7.125 – 8.5 GHz

Peak Power at Frequency, maximum 92.00 kW @ 6.00 GHz

Material Specifications

Material Type Brass

277SEM

Environmental Specifications

Operating Temperature -55 °C to +85 °C (-67 °F to +185 °F)

Storage Temperature -55 °C to +85 °C (-67 °F to +185 °F)

Packaging and Weights

Weight, net 1.3 kg | 2.866 lb

Regulatory Compliance/Certifications

Agency	Classification
CHINA-ROHS	Below maximum concentration value
ISO 9001:2015	Designed, manufactured and/or distributed under this quality management system
REACH-SVHC	Compliant as per SVHC revision on www.commscope.com/ProductCompliance
ROHS	Compliant
UK-ROHS	Compliant



* Footnotes

Insertion Loss, typical $0.05\sqrt{\text{freq}}$ (GHz) (not applicable for elliptical waveguide)