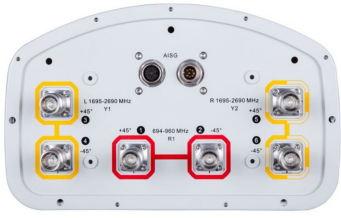


# RVV65B-C3-3XR



6-port sector antenna, 2x 694–960 and 4x 1695–2690 MHz, 65° HPBW, 3x RET

- All Internal RET actuators are connected in “Cascaded SRET” configuration
- Uses the 4.3-10 connector which is 40 percent smaller than the 7-16 DIN connector

This product will be discontinued on: November 30, 2024

Replaced By:

6P-2L4M-B3  
RVV-65B-R3

6-port sector antenna, 2x 694-960 and 4x 1695–2690 MHz, 65° HPBW,3x RET

## General Specifications

<b>Antenna Type</b>	Sector
<b>Band</b>	Multiband
<b>Grounding Type</b>	RF connector inner conductor and body grounded to reflector and mounting bracket
<b>Performance Note</b>	Outdoor usage   Wind loading figures are validated by wind tunnel measurements described in white paper WP-112534-EN
<b>RF Connector Interface</b>	4.3-10 Female
<b>RF Connector Location</b>	Bottom
<b>RF Connector Quantity, mid band</b>	4
<b>RF Connector Quantity, low band</b>	2
<b>RF Connector Quantity, total</b>	6

## Remote Electrical Tilt (RET) Information

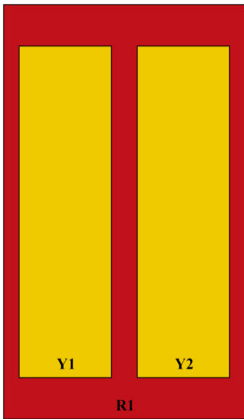
<b>RET Interface</b>	8-pin DIN Female   8-pin DIN Male
<b>RET Interface, quantity</b>	1 female   1 male
<b>Input Voltage</b>	10–30 Vdc
<b>Internal RET</b>	Low band (1)   Mid band (2)
<b>Power Consumption, active state, maximum</b>	10 W
<b>Power Consumption, idle state, maximum</b>	1 W
<b>Protocol</b>	3GPP/AISG 2.0

# RVV65B-C3-3XR

## Dimensions

<b>Width</b>	301 mm   11.85 in
<b>Depth</b>	180 mm   7.087 in
<b>Length</b>	1850 mm   72.835 in
<b>Net Weight, antenna only</b>	23 kg   50.706 lb

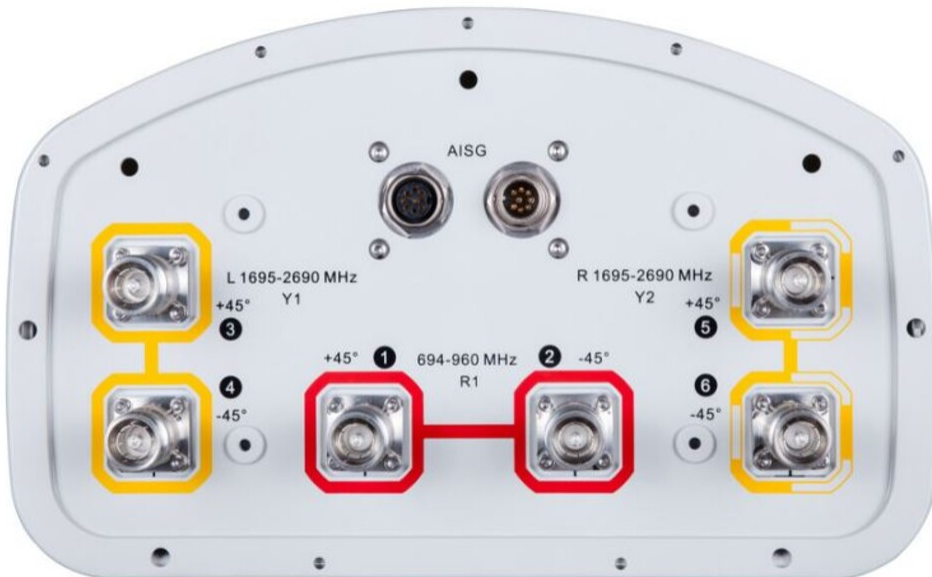
## Array Layout



Array ID	Frequency (MHz)	RF Connector	HPBW	RET (SRET)	AISG No.	AISG RET UID
R1	694-960	1 - 2	65°	1	AISG1	CPxxxxxxxxxxxxxxxxR1
Y1	1695-2690	3 - 4	65°	2	AISG1	CPxxxxxxxxxxxxxxxxY1
Y2	1695-2690	5 - 6	65°	3	AISG1	CPxxxxxxxxxxxxxxxxY2

(Sizes of colored boxes are not true depictions of array sizes)

## Port Configuration



# RVV65B-C3-3XR

## Electrical Specifications

<b>Impedance</b>	50 ohm
<b>Operating Frequency Band</b>	1695 – 2690 MHz   694 – 960 MHz
<b>Polarization</b>	±45°
<b>Total Input Power, maximum</b>	500 W @ 50 °C

## Electrical Specifications

Frequency Band, MHz	694–790	790–890	890–960	1695–1920	1920–2180	2300–2500	2500–2690
<b>Gain at Mid Tilt, dBi</b>	15	15.4	15.4	17.8	18.8	19.2	19.1
<b>Beamwidth, Horizontal, degrees</b>	71	71	68	63	61	61	62
<b>Beamwidth, Vertical, degrees</b>	11.7	10.5	9.9	5.6	5	4.3	4.1
<b>Beam Tilt, degrees</b>	0–13	0–13	0–13	2–12	2–12	2–12	2–12
<b>USLS (First Lobe), dB</b>	16	16	16	21	19	20	17
<b>Front-to-Back Ratio at 180°, dB</b>	29	34	30	30	33	35	32
<b>Front-to-Back Total Power at 180° ± 30°, dB</b>	23	24	23	24	26	27	25
<b>Isolation, Cross Polarization, dB</b>	28	28	28	28	28	28	28
<b>Isolation, Inter-band, dB</b>	30	30	30	30	30	30	30
<b>VSWR   Return loss, dB</b>	1.5 14.0	1.5 14.0	1.5 14.0	1.5 14.0	1.5 14.0	1.5 14.0	1.5 14.0
<b>PIM, 3rd Order, 2 x 20 W, dBc</b>	-150	-150	-150	-150	-150	-150	-150
<b>Input Power per Port at 50°C, maximum, watts</b>	300	300	300	250	250	250	250

## Electrical Specifications, BASTA

Frequency Band, MHz	694–790	790–890	890–960	1695–1920	1920–2180	2300–2500	2500–2690
<b>Gain by all Beam Tilts, average, dBi</b>	14.9	15.3	15.2	17.7	18.7	19.1	18.9
<b>Gain by all Beam Tilts Tolerance, dB</b>	±0.4	±0.3	±0.5	±0.9	±0.5	±0.4	±0.6
<b>Beamwidth, Horizontal Tolerance, degrees</b>	±1	±1	±2	±4	±5	±5	±4
<b>Beamwidth, Vertical Tolerance, degrees</b>	±0.7	±0.6	±0.5	±0.4	±0.4	±0.2	±0.2
<b>USLS, beampeak to 20° above beampeak, dB</b>	16	16	17	14	16	16	14

# RVV65B-C3-3XR

<b>CPR at Boresight, dB</b>	23	24	23	17	18	19	21
<b>CPR at Sector, dB</b>	11	14	11	12	8	6	9

## Mechanical Specifications

<b>Wind Loading @ Velocity, frontal</b>	281.0 N @ 150 km/h (63.2 lbf @ 150 km/h)
<b>Wind Loading @ Velocity, lateral</b>	247.0 N @ 150 km/h (55.5 lbf @ 150 km/h)
<b>Wind Loading @ Velocity, maximum</b>	618.0 N @ 150 km/h (138.9 lbf @ 150 km/h)
<b>Wind Loading @ Velocity, rear</b>	286.0 N @ 150 km/h (64.3 lbf @ 150 km/h)
<b>Wind Speed, maximum</b>	241 km/h (150 mph)

## Packaging and Weights

<b>Width, packed</b>	409 mm   16.102 in
<b>Depth, packed</b>	299 mm   11.772 in
<b>Length, packed</b>	2036 mm   80.158 in
<b>Weight, gross</b>	34 kg   74.957 lb

## Regulatory Compliance/Certifications

<b>Agency</b>	<b>Classification</b>
CE	Compliant with the relevant CE product directives
CHINA-ROHS	Above maximum concentration value
ISO 9001:2015	Designed, manufactured and/or distributed under this quality management system
REACH-SVHC	Compliant as per SVHC revision on <a href="http://www.commscope.com/ProductCompliance">www.commscope.com/ProductCompliance</a>
ROHS	Compliant/Exempted
UK-ROHS	Compliant/Exempted



## Included Products

BSAMNT-3	–	Wide Profile Antenna Downtilt Mounting Kit for 2.4 - 4.5 in (60 - 115 mm) OD round members. Kit contains one scissor top bracket set and one bottom bracket set.
----------	---	--

## \* Footnotes

<b>Performance Note</b>	Severe environmental conditions may degrade optimum performance
-------------------------	---