

LLPX210R-V1



4-port sector antenna, 4x 2300–2700 MHz, 33° HPBW, 2x RET with manual override

- Excellent upper sidelobe suppression

General Specifications

Antenna Type	Sector
Band	Single band
Grounding Type	RF connector inner conductor and body grounded to reflector and mounting bracket
Performance Note	Outdoor usage
Radome Material	ASA, UV stabilized
Radiator Material	Low loss circuit board
Reflector Material	Aluminum
RF Connector Interface	7-16 DIN Female
RF Connector Location	Bottom
RF Connector Quantity, high band	4
RF Connector Quantity, total	4

Remote Electrical Tilt (RET) Information

RET Interface	8-pin DIN Male
RET Interface, quantity	2 male
Input Voltage	10–30 Vdc
Internal RET	High band (2)
Power Consumption, idle state, maximum	2 W
Power Consumption, normal conditions, maximum	13 W
Protocol	3GPP/AISG 2.0 (Single RET)

Dimensions

Width	610 mm 24.016 in
Depth	115 mm 4.528 in
Length	1077 mm 42.402 in

LLPX210R-V1

Net Weight, without mounting kit 14.5 kg | 31.967 lb

Electrical Specifications

Impedance 50 ohm
Operating Frequency Band 2300 – 2700 MHz
Polarization $\pm 45^\circ$

Electrical Specifications

Frequency Band, MHz	2300–2500	2500–2700
Gain, dBi	20.1	20.2
Beamwidth, Horizontal, degrees	34	31
Beamwidth, Vertical, degrees	7.3	6.8
Beam Tilt, degrees	0–10	0–10
USLS (First Lobe), dB	22	19
Null Fill, dB	-22	-22
Front-to-Back Ratio at 180°, dB	33	33
Isolation, Cross Polarization, dB	30	30
VSWR Return loss, dB	1.43 15.0	1.43 15.0
PIM, 3rd Order, 2 x 20 W, dBc	-150	-150
Input Power per Port, maximum, watts	250	250

Electrical Specifications, BASTA

Frequency Band, MHz	2300–2500	2500–2700
Gain by all Beam Tilts, average, dBi	19.9	19.9
Gain by all Beam Tilts Tolerance, dB	± 0.3	± 0.7
Gain by Beam Tilt, average, dBi	0° 19.9 5° 19.9 10° 19.8	0° 20.2 5° 20.1 10° 19.3
Beamwidth, Horizontal Tolerance, degrees	± 2.2	± 2.1
Beamwidth, Vertical Tolerance, degrees	± 0.3	± 0.2
USLS, beampeak to 20° above beampeak, dB	18	18
Front-to-Back Total Power at 180° \pm 30°, dB	29	30
CPR at Boresight, dB	18	19

Mechanical Specifications

Wind Loading @ Velocity, frontal 862.0 N @ 150 km/h (193.8 lbf @ 150 km/h)
Wind Loading @ Velocity, lateral 70.0 N @ 150 km/h (15.7 lbf @ 150 km/h)

LLPX210R-V1

Wind Loading @ Velocity, rear	889.0 N @ 150 km/h (199.9 lbf @ 150 km/h)
Wind Speed, maximum	200 km/h (124 mph)

Packaging and Weights

Width, packed	693 mm 27.283 in
Depth, packed	221 mm 8.701 in
Length, packed	1285 mm 50.591 in
Weight, gross	32 kg 70.548 lb

Regulatory Compliance/Certifications

Agency	Classification
ISO 9001:2015	Designed, manufactured and/or distributed under this quality management system

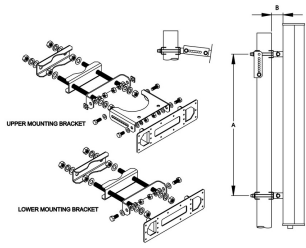
Included Products

T-045-GL-E	-	Adjustable Tilt Pipe Mounting Kit for 2.0"-4.5" (60-115mm) OD round members for panel antennas. Includes 2 clamp sets.
------------	---	--

* Footnotes

Performance Note	Severe environmental conditions may degrade optimum performance
-------------------------	---

T-045-GL-E



Adjustable Tilt Pipe Mounting Kit for 2.0"-4.5" (60-115mm) OD round members for panel antennas. Includes 2 clamp sets.

Product Classification

Product Type Adjustable tilt mounting kit

General Specifications

Application Outdoor

Color Silver

Dimensions

Compatible Length, maximum 1200 mm | 47.244 in

Compatible Length, minimum 850 mm | 33.465 in

Compatible Diameter, maximum 115 mm | 4.528 in

Compatible Diameter, minimum 60 mm | 2.362 in

Antenna-to-Pipe Distance 85 mm | 3.346 in

Bracket-to-Bracket Distance 761 mm | 29.961 in

Weight, net 6 kg | 13.228 lb

Material Specifications

Material Type Galvanized steel

Mechanical Specifications

Mechanical Tilt 0°-10°

Packaging and Weights

Included Brackets | Hardware

Packaging quantity 1

Regulatory Compliance/Certifications

Agency	Classification
CHINA-ROHS	Below maximum concentration value

T-045-GL-E

ISO 9001:2015	Designed, manufactured and/or distributed under this quality management system
REACH-SVHC	Compliant as per SVHC revision on www.commscope.com/ProductCompliance
ROHS	Compliant
UK-ROHS	Compliant

