

# CMAX-EXT-43-153

---



Cell-Max™ Low PIM Directional Outdoor Antenna, 698–960 MHz and 1710–2700 MHz, 4.3-10

## Product Classification

<b>Product Type</b>	Over-the-head stadium antenna
<b>Product Brand</b>	Cell-Max™

## General Specifications

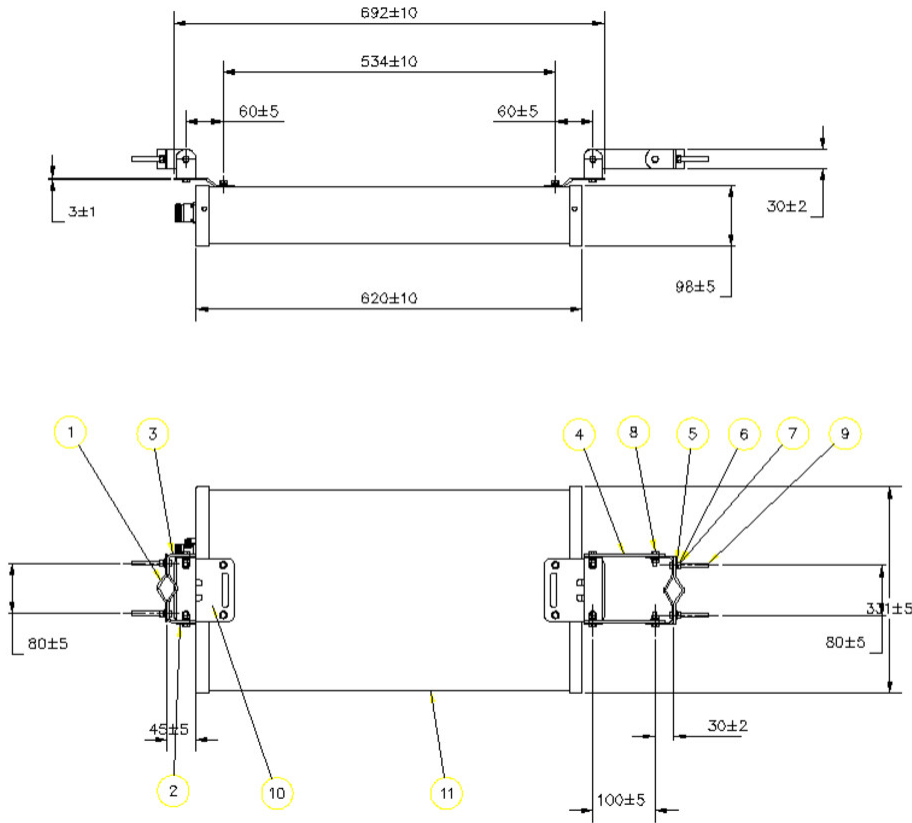
<b>Application</b>	Indoor/Outdoor
<b>Antenna Type</b>	Directional
<b>Antenna Array Characteristic</b>	SISO
<b>Polarization</b>	Vertical
<b>Color</b>	White (RAL 9016)
<b>Mounting</b>	Poles between 25–60 mm with supplied clamps
<b>Number of Ports</b>	1
<b>Radome Material</b>	PVC, UV resistant
<b>RF Connector Interface</b>	4.3-10 Female

## Dimensions

<b>Width</b>	331 mm   13.032 in
<b>Depth</b>	98 mm   3.858 in
<b>Length</b>	620 mm   24.409 in

# CMAx-EXT-43-153

## Outline Drawing



## Electrical Specifications

<b>Impedance</b>	50 ohm
<b>Lightning Protection</b>	dc Ground
<b>Operating Frequency Band</b>	1710 – 2700 MHz   698 – 960 MHz
<b>Electrical Note</b>	Values typical, unless otherwise stated

## Electrical Specifications

Frequency Band, MHz	698–800	800–960	1710–2200	2200–2700
<b>Gain, dBi</b>	10	11	11	11
<b>Beamwidth, Horizontal, degrees</b>	68	60	60	52
<b>Beamwidth, Vertical, degrees</b>	30	28	30	30
<b>Front-to-Back Ratio at 180°, dB</b>	18	18	20	20
<b>VSWR   Return loss, dB</b>	1.8 10.9	1.8 10.9	1.8 10.9	1.8 10.9
<b>PIM, 3rd Order, 2 x 20 W, dBc</b>	-153	-153	-153	-153

# CMAX-EXT-43-153

---

<b>Input Power per Port, maximum, watts</b>	100	100	100	100
---	-----	-----	-----	-----

## Mechanical Specifications

**Wind Loading @ Velocity, maximum** 686.0 N @ 216 km/h (154.2 lbf @ 216 km/h)

**Wind Speed, maximum** 216 km/h | 134.216 mph

## Environmental Specifications

**Operating Temperature** -40 °C to +60 °C (-40 °F to +140 °F)

**Relative Humidity** Up to 100%

**Ingress Protection Test Method** IEC 60529:2001, IP65

## Packaging and Weights

**Width, packed** 350 mm | 13.78 in

**Depth, packed** 160 mm | 6.299 in

**Length, packed** 830 mm | 32.677 in

**Packaging quantity** 1

**Weight, gross** 7.4 kg | 16.314 lb

**Weight, net** 4.7 kg | 10.362 lb

## Regulatory Compliance/Certifications

<b>Agency</b>	<b>Classification</b>
CHINA-ROHS	Below maximum concentration value
ISO 9001:2015	Designed, manufactured and/or distributed under this quality management system
REACH-SVHC	Compliant as per SVHC revision on <a href="http://www.commscope.com/ProductCompliance">www.commscope.com/ProductCompliance</a>
ROHS	Compliant
UK-ROHS	Compliant

