



## HGS620 Shielded Outlet Termination Instructions – Using Jack termination tool (JTT-HGS | 760257784)

### General

These instructions provide the recommended termination procedure for **SYSTIMAX® GigaSPEED® X10D** HGS620 shielded outlets on F/UTP and S/FTP cables. The outlets are **UL** approved.

Refer to the **SYSTIMAX GigaSPEED X10D** High Density Shielded Solutions Design and Installation Guidelines for further information.

The **Jack termination tool** (JTT-HGS | 760257784) is required for outlet termination.

Ordering information is listed below:

Material ID	Part No.	Description
760152801	HGS620	HGS620 <b>GigaSPEED X10D</b> shielded outlet
760152819	HGS620-BULK100	HGS620 <b>GigaSPEED X10D</b> shielded outlet (100 pack)

### How to Contact Us

- To find out more about **CommScope®** products, visit us on the web at <http://www.commscope.com/>
- For technical assistance:
  - Within the United States, contact your local account representative or technical support at 1-800-344-0223. Outside the United States, contact your local account representative or Authorized Business Partner.
  - Within the United States, report any missing/damaged parts or any other issues to CommScope Customer Claims at 1-866-539-2795. Outside the United States, contact your local account representative or Authorized Business Partner.

### Tools Required

- **Jack termination tool** (JTT-HGS | 760257784)
- Scissors
- Side cutters

**NOTE:** If using termination tool 1725150-3 or 1725150-6 with revision J or higher, a separate adapter can be ordered. (MID 760257785)

## Preparation of F/UTP Cable for Termination

1. Place the cable next to the scale on the side of the tool. Stop the end of the cable at the mark below the desired strip length (indicated in mm). Refer Figure 1.  
**Note:** 35mm [1.378 in.] strip length is a good starting point

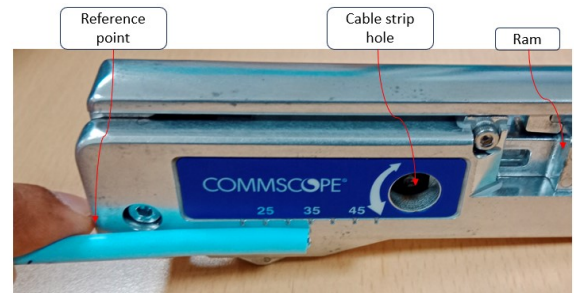


Figure 1

2. Grasp the cable at the end of the tool. That is considered the reference point for the scale.
3. Pull the ram completely forward and insert the cable through the strip hole until the reference point meets the outside surface of the tool. Refer figure 2
4. Release the ram. The spring will provide the force for the cable stripping operation.
5. Rotate the tool around the cable. Approximately one and 1/4 turns are normally sufficient to cut through the cable jacket. An arrow next to the cable strip hole indicates the direction of rotation for different depth cuts.



Figure 2

Rotating the tool in the direction of the smaller arrow will provide a minimal cut; rotating the tool in the direction of the larger arrow will provide a deeper cut.

**(Note:** It is recommended that the minimum depth be cut first. If a deeper cut is required, rotate the tool in the direction on the larger arrow.)

6. Pull the ram forward and remove the cable.
7. Fold foil and drain wire back over cable jacket.
8. Trim off clear cellophane wrapping.
9. Separate the pairs, cut the flute flush with end of jacket, and restore pairs to their original positions.
10. Ensure that foil is pressed tight over the jacket and then wrap drain wire around foil close to end of cable. **Do not overlap drain wire when wrapping.**
11. Arrange pairs in the order below (Refer Figure 3):
  - Brown
  - Blue
  - Orange
  - Green

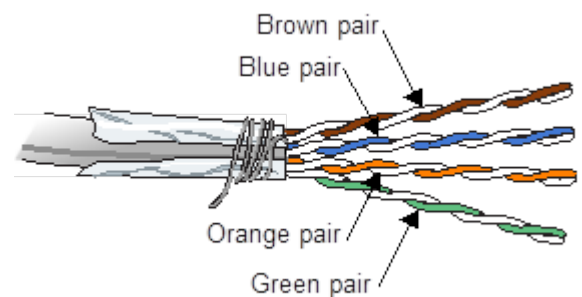


Figure 3

## Preparation of S/FTP Cable for Termination

1. Score the cable jacket like F/UTP Cable. Refer Figure 2

2. Push braided shield straight back and using scissors, trim braided shield back to approximately 1" (25mm) from end of jacket. Refer Figure 4

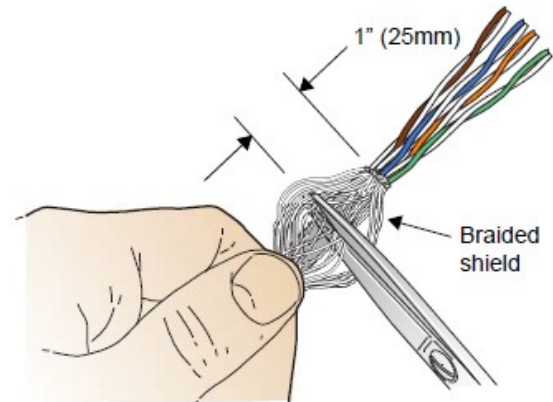


Figure 4

3. Twist braided shield around jacket close to end. Refer Figure 5



Figure 5

4. Use Jack termination tool to strip the foil shield of each twisted pair cables. Pull the 'Slider' & place the cable in the tool and then release the slider as shown in Figure 6. Keep the cable fixed and rotate the tool once.

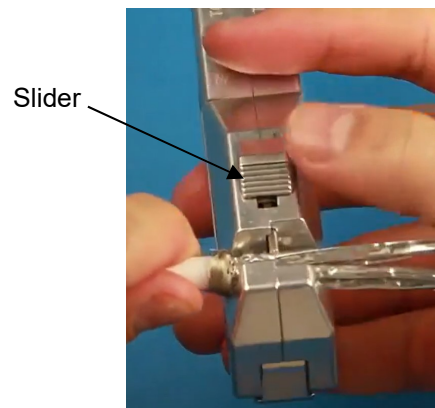


Figure 6

5. Remove the foil shields from each pair & arrange it as shown below & in Figure 7.

- Brown
- Blue
- Orange
- Green

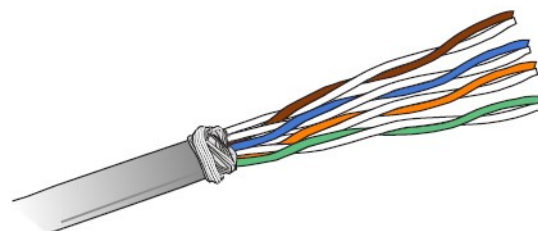


Figure 7

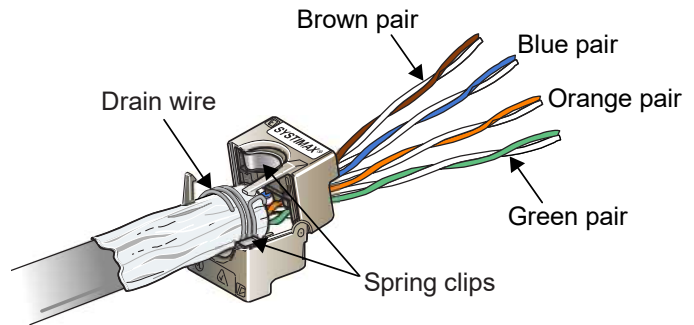
## Insert Cable into Termination Manager (F/UTP or S/FTP Type)

1. Insert cable end completely into opened termination manager with pair colors oriented to the labels on the termination manager.

**Important:** Ensure drain wire on F/UTP cable or braided shield on S/FTP cable will engage the spring clips in termination manager.

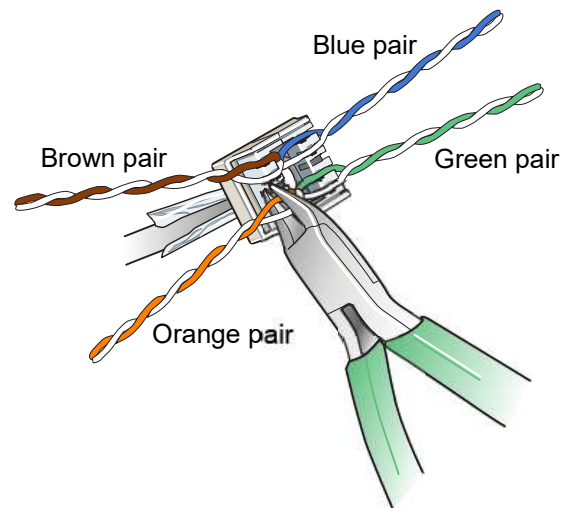
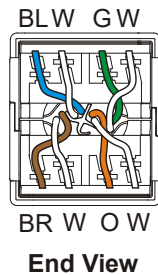
2. Close termination manager until latches engage, and a click is heard.

**Note:** F/UTP cable shown.



## Seat and Trim Conductors

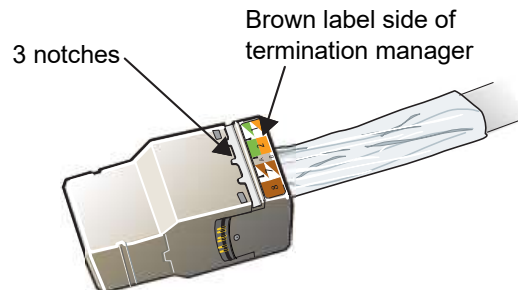
1. Following the label colors (T568B shown), place conductors directly into termination slots. Seat conductors by pulling tight into slots, then trim pairs flush.



## Termination of the Jack

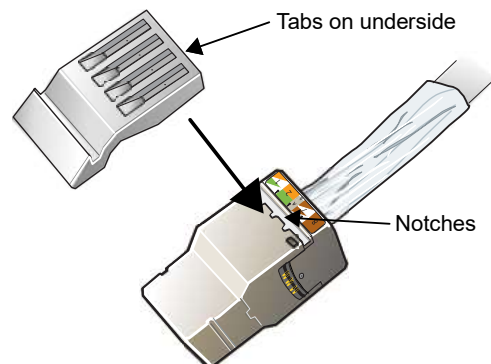
1. Carefully align and insert termination manager squarely into outlet body.

**Note:** For correct orientation, the Brown label side faces the 3 notches.

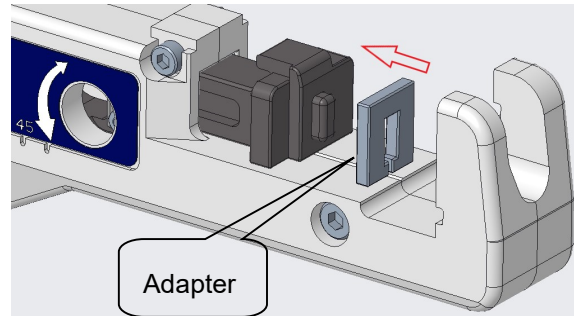


2. If outlet will be used in a Keystone compatible opening, insert Keystone clip on outlet before placing it in seating tool and seating termination manager to outlet body.

**Note:** The clip has three tabs that slide into three notches on outlet body.



3.1 If using termination tool 1725150-3 or 1725150-6 with revision J or higher, a separate single adapter (out of MID 760257785) shall be assembled over the tool as shown here.

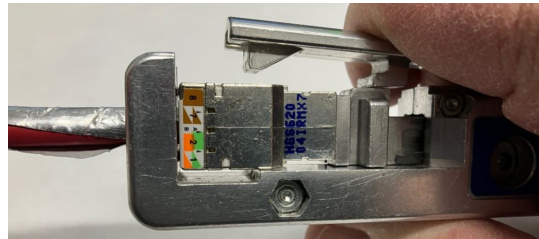


3.2 Jack termination tool (JTT-HGS | 760257784) comes with pre-assembled 'Adapter.'

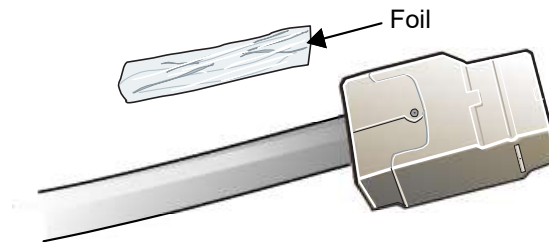
4. Insert the Jack as shown on the tool. Ensure jack connector is aligned properly before compressing tool handle.



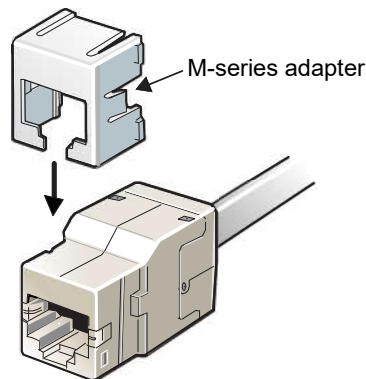
5. Push the tool handle until the hook on the bottom of the handle just touches the top of the ram. Then release the handle and remove the connector.



6. For F/UTP cable only, trim excess foil.



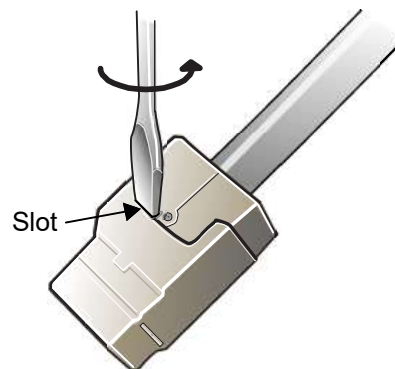
7. If outlet will be used in a faceplate or box application, attach M-series adapter.



Note: The M-series adapter is not allowed where grounding is required.

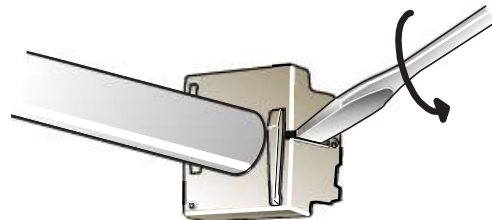
## Inspection or Repair of Termination

**Note:** To enable inspection or repair, the termination manager can be released from the outlet body by inserting a small flat blade screwdriver in slot located on either side of outlet and twisting as shown.



To release the termination manager, insert a small flat blade screwdriver between the two halves as shown and twist to disengage the latches.

A spudger tool can then be used to remove conductors for repair.



## Installation in Shallow Boxes

It is acceptable to bend the exiting cable up to 90°, as tight as necessary, in any direction. Use care to ensure the cable shield remains inside the termination manager.