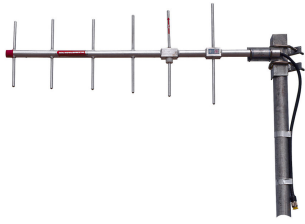


DB436-C



1-port sector (yagi) antenna, 450–470 MHz, 60° HPBW, fixed electrical tilt

- Highly directional coverage and good front-to-back ratio
- Rugged, reliable design
- Stacked arrays

General Specifications

Antenna Type	Sector
Band	Single band
Color	Silver
Grounding Type	RF connector inner conductor and body grounded to reflector and mounting bracket
Performance Note	Outdoor usage
Radiator Material	Aluminum
RF Connector Interface	N Male
RF Connector Location	Bottom
RF Connector Quantity, low band	1
RF Connector Quantity, total	1

Dimensions

Width	368.3 mm 14.5 in
Depth	25.4 mm 1 in
Length	889 mm 35 in
Net Weight, without mounting kit	3.2 kg 7.055 lb

Electrical Specifications

Impedance	50 ohm
Operating Frequency Band	450 – 470 MHz
Polarization	Vertical

Electrical Specifications

Frequency Band, MHz	450–470
----------------------------	----------------

DB436-C

Gain, dBi	12.1
Beamwidth, Horizontal, degrees	60
Beamwidth, Vertical, degrees	44
Beam Tilt, degrees	0
Front-to-Back Ratio at 180°, dB	16
VSWR Return loss, dB	1.5 14.0
Input Power per Port, maximum, watts	250

Mechanical Specifications

Wind Loading @ Velocity, maximum	80.1 N @ 100 mph (18.0 lbf @ 100 mph)
Wind Speed, maximum	201 km/h (125 mph)

Packaging and Weights

Included	U-bolts
-----------------	---------

Regulatory Compliance/Certifications

Agency	Classification
CE	Compliant with the relevant CE product directives
CHINA-ROHS	Below maximum concentration value
ISO 9001:2015	Designed, manufactured and/or distributed under this quality management system
REACH-SVHC	Compliant as per SVHC revision on www.commscope.com/ProductCompliance
ROHS	Compliant
UK-ROHS	Compliant



Included Products

11653	–	V-Bolt Mounting Kit for 3 in (76.2 mm) max OD round members. Set of two V-bolts clamp sets.
-------	---	---

* Footnotes

Performance Note	Severe environmental conditions may degrade optimum performance
-------------------------	---